

# Original BMW Parts and Accessories. Installation Instructions.



## M Performance Silencer Retrofit Kit.

**BMW 2 Series Coupé M240i AGA (G42)**

**BMW 3 Series Saloon M340i, M340xi (G20)**

**BMW 4 Series Coupé M440i, M440xi (G22)**

**BMW 4 Series Convertible M440i, M440xi (G23)**

**BMW 4 Series Gran Coupé M440i, M440xi (G26)**

### Retrofit kit number

18 30 2 464 492	M Performance silencer (G2x)
18 30 5 A3B F69	M Performance silencer (G42)
18 30 5 B46 400	M Performance silencer (G2x LCI after 03/2024)

### Installation time

The installation time is **approx. 1.0 hour**. This may vary depending on the condition of the vehicle and the equipment in it.

### Important information

These installation instructions are primarily designed for use within the BMW dealership organisation and by authorised BMW service companies.

These installation instructions are intended for use by qualified specialist staff trained on BMW cars with the relevant expert knowledge.

All work must be completed using the latest BMW repair manuals, wiring diagrams, servicing manuals and work instructions, in a logical order, using the prescribed tools (special tools), and observing current health and safety regulations.

**If you experience installation or functional problems, restrict troubleshooting to approx. 0.5 hours for mechanical work and 1.0 hour for electrical work.**

To avoid unnecessary extra work and/or costs, please send an inquiry to the technical parts support team.

Quote the following information:

- VIN,
- retrofit kit part number,
- a detailed description of the problem,
- any work already carried out.

Do not archive the printout of these installation instructions. The current version can be found in the EPC.

### Pictograms



Denotes instructions that draw your attention to dangers.



Denotes instructions that draw your attention to special features.



Denotes the end of the instruction or warning text.

### Installation information

Some of the installation is shown only on the left-hand side of the car; proceed in the same way on the right-hand side of the car.

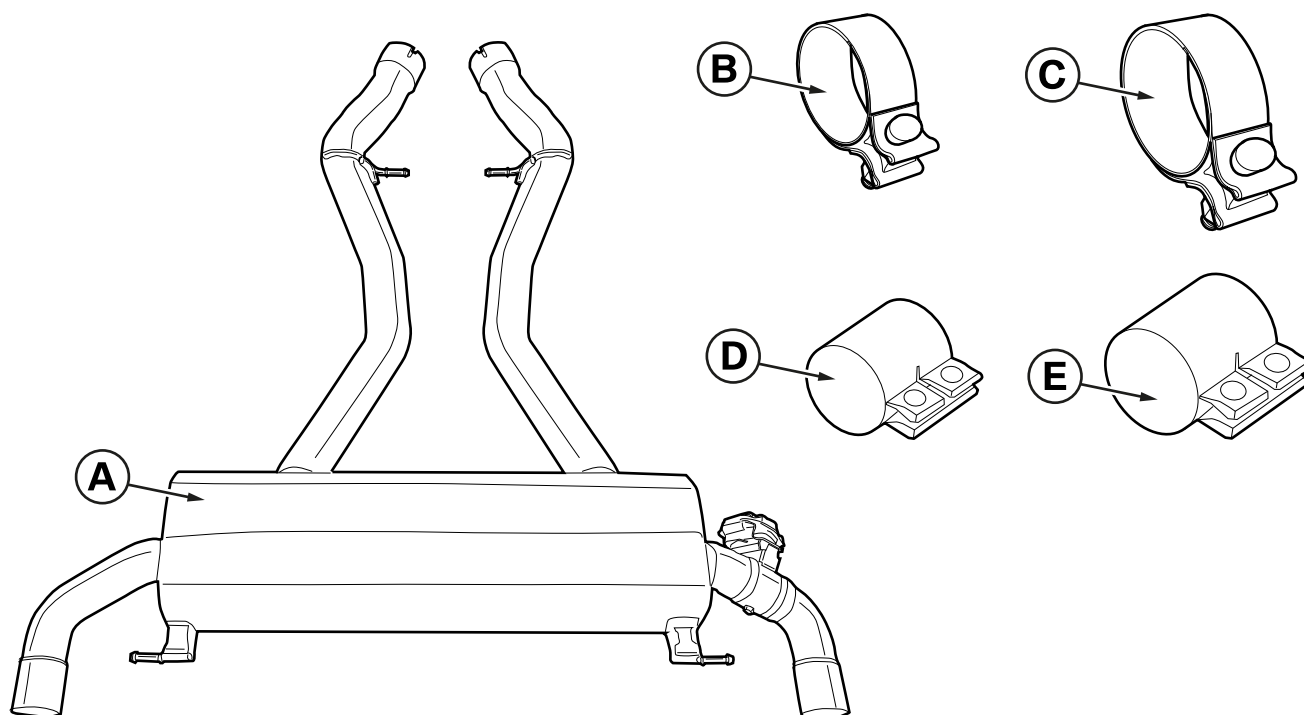
All illustrations show LHD cars; proceed in the same way on RHD cars.

**Special tools required**  
None

Table of contents

Section	Page
1. M Performance silencer parts list .....	4
2. Preparatory work .....	5
3. M Performance silencer installation .....	6
4. Teach electric actuators (from G2x LCI 03/2024) .....	9

## 1. M Performance silencer parts list



G42 0061 V

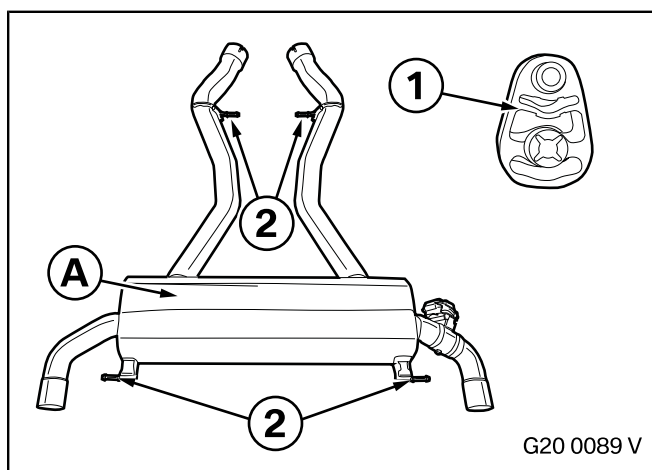
### Legend

- A** Silencer
- B** Clamping ring 73 mm
- C** Clamping ring 78 mm
- D** Clamping ring 70 mm  
(for M240i cars only, must be ordered separately, see EPC for Part No. and further details)
- E** Clamping ring 75 mm  
(for M240i cars only, must be ordered separately, see EPC for Part No. and further details)

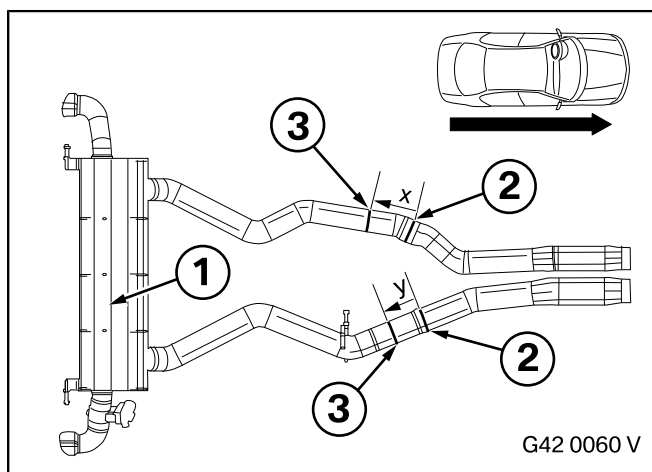
2. Preparatory work

	ISTA/AIR No.
<b>The following components must be removed first of all</b>	
Remove and install the complete exhaust system	18 00 018

### 3. M Performance silencer installation



Remove the rubber holders from the standard silencer (1) and push them onto the holders (2) of silencer **A**.

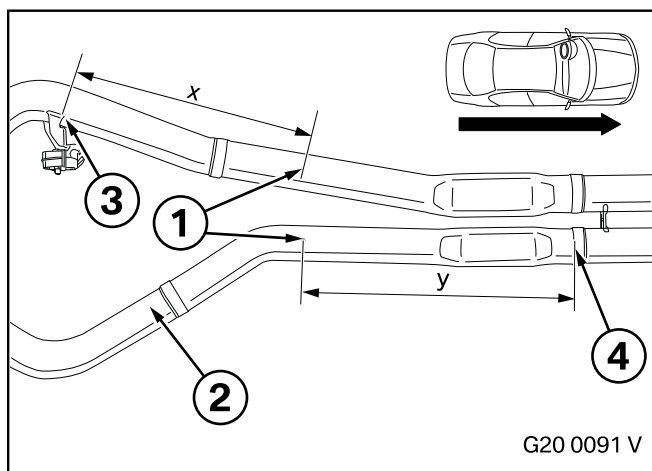


#### For M240i cars

If there are no counterpunch marks on the standard silencer (1), the appropriate marks must be made.

On the top pipe, make a mark (3) at a distance  **$x = 130 \text{ mm}$**  towards the rear from the edge (2).

On the bottom pipe, make a mark (3) at a distance  **$y = 110 \text{ mm}$**  towards the rear from the edge (2).

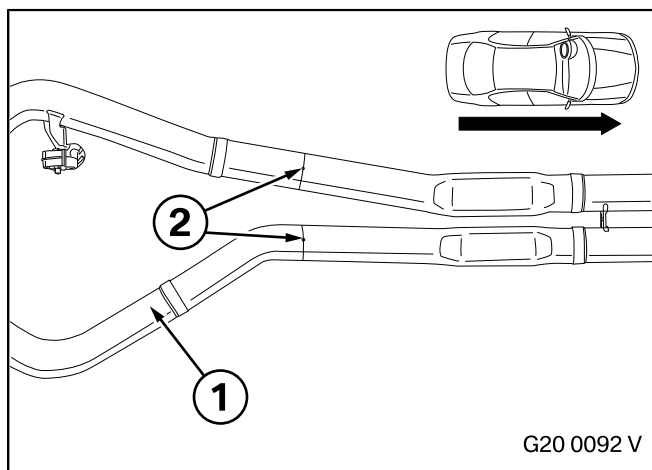


#### For all cars except M240i

If there are no counterpunch marks (1) on the standard silencer (2), the appropriate marks must be made.

On a curved pipe, make a mark (1) at a distance  **$x = 492 \text{ mm}$**  towards the front from the edge of the vibration absorber console (3).

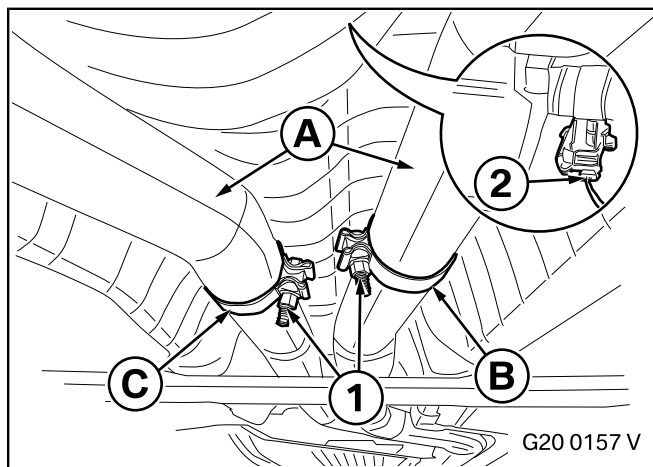
On a straight pipe, make a mark (1) at a distance  **$y = 545 \text{ mm}$**  towards the rear from the edge (4).



#### For all cars

Cut the standard silencer (1) at the counterpunch marks (2) using suitable equipment and treat the area with the standard anti-corrosion coating.

### 3. M Performance silencer installation



☐ The diagram shows the situation towards the front.

The clamping rings **B** and **C** are used **for all cars except M240i**.

The clamping rings **D** and **E** are used **for M240i cars**. ◀

Attach clamping rings **B/D** and **C/E** to the rear pipe ends of the silencer system **A**, the screw connection (1) must point towards the inside as shown.

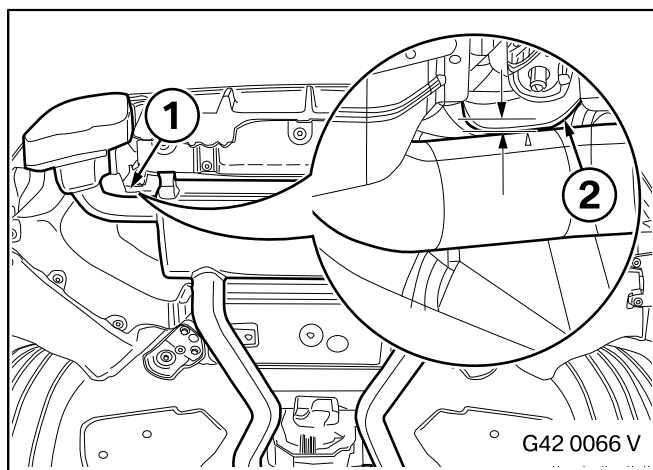
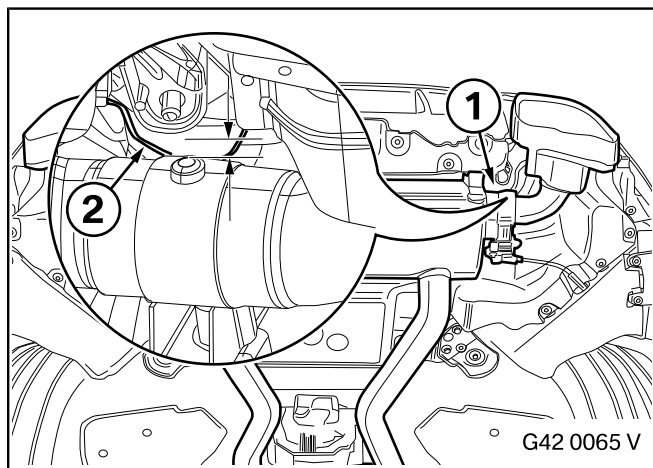
Then install the silencer system **A** as described in **ISTA/AIR**.

Tighten clamping rings **B** and **C** with a torque of **55 Nm**.

Tighten clamping rings **D** and **E** with a torque of **45 Nm**.

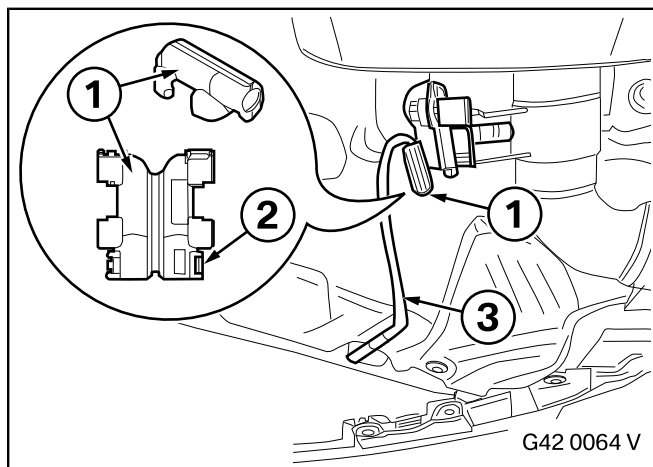
#### For M240i cars

The heat shield (2) on the right-hand side of the car near the exhaust system mounting (1) must be re-shaped as far as possible towards the body using suitable tools.



The heat shield (2) on the left-hand side of the car near the exhaust system mounting (1) must be re-shaped as far as possible towards the body using suitable tools.

### 3. M Performance silencer installation



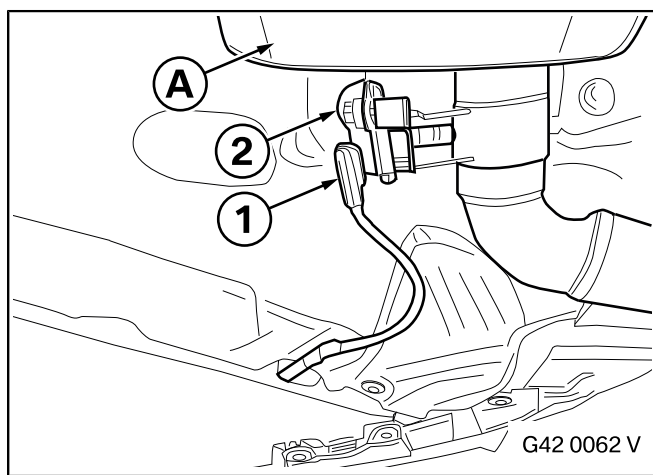
#### For all cars

▶ This process can be carried out with the plug clip (1) either installed or not installed. ◀

Open the plug clip (1) at the detent (2) using suitable equipment (for example a screwdriver).

Turn the plug clip (1) through 180° and clip the detent (2) back into position.

Adjust the cable guide as you do this so that there is sufficient space for the cable (3).



Connect the cable (1) to the flap actuator (2) of the silencer system **A**.



#### **4. Teach electric actuators (from G2x LCI 03/2024)**

Run the service function in the ISSS using the following path:

- Drive system
- Engine electronics
- Adjustment programs
- Teach exhaust valve/Move into installation position
- Teach electric actuators